

Ice-cube maker B 70 Plus



Description

More efficient and economic – the optimised ice cube maker series B Plus supplies fully tapered ice cubes in high production quantities and is also very economic.

Features

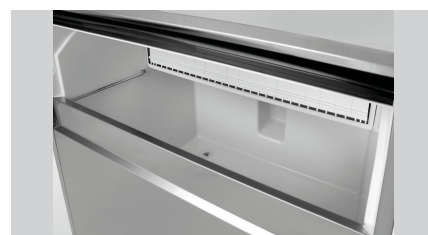
- | | |
|------------------------------------|---------------------------------------|
| • Water outlet: | Ø 20 mm |
| • Design ice cube: | Tapered form (full taper) |
| • Ice cube size: | 35 x 32 mm, 20 g |
| • Production / work step: | 56 Ice cubes |
| • Number of ice cube sizes: | Size can be adjusted steplessly |
| • Power load: | 0,88 kW 230 V 50 Hz |
| • Properties: | Switch for the ice cube size |
| • Coolant: | R134a / 0,390 kg |
| • Properties: | Cleaning function |
| | Water consumption / hour: 2.46 litres |
| • Control lamp: | ON/OFF |
| • ON/OFF switch: | Yes |
| • Height-adjustable feet: | No |
| • Height without feet: | 910 mm |
| • Colour: | Silver |
| • Control unit: | Electronic |
| • Can be fitted below the counter: | Yes |

► Continue on the next page



- Design ice cube: Conical (full cone)
- ✓ Ice cube size: 35 x 32 mm, 20 g

- Production max.: 72 kg / 24 hours.
- Production / operation: 56 ice cubes



- Storage container capacity: 42 kg



- Can be fitted below the counter



- Selector switch for the ice cube size
- Number of ice cube sizes: Size can be adjusted steplessly

Ice-cube maker B 70 Plus

- Can be installed: No
- Water connection: 3/4"
- Climate class: T
- Cooling: Air cooled
- Filling level sensor: Yes
- Storage container capacity: 42 kg
- Production max.: 72 kg / 24 h
- Production by means of: Spray system
- Including: 1 ice shovel
- Material: Stainless steel
Plastic
Steel
Galvanised
- Important information: Clearance to all sides at least 15 cm
- Size: W 700 x D 580 x H 1,015 mm
- Weight: 55.4 kg



Ice-cube maker B 70 Plus

Add on Products

Stainl.steel polish.spray 500ml can



- Content / can: 500 ml
- Application: Remove heavy soiling such as grease residue first
Do not spray onto hot surfaces
- allow them to cool down first:
- Application: Before use, bring the can to room temperature and shake well

Code-No. 173031
GTIN 4015613360195

Ice Crusher, stainless steel



STAINLESS
STEEL



- Colour: Silver
- Material: Stainless steel
- Storage capacity collection tray: 1 kg
- Important information: -
- Model: With collection tray
- Content of ice container: 1,7 litres litre(s)
- Properties ice tray: With lid

Code-No. 135012
GTIN 4015613479118

Partial desalination system TKD 13400 FB



- Desalination type: Partial desalination
- Water connection: 3/4"
- Material: Plastic
Glass-fibre reinforced
- Sampling tap: Yes
- Colour: Blue
- Important information: -

Code-No. 109878
GTIN 4015613681597