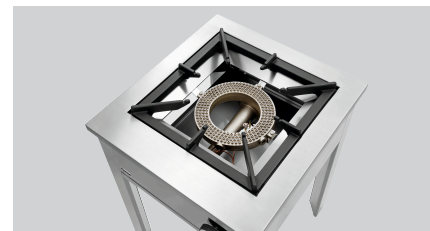


Stock-pot stove G-WB 1K1250 XL



- ▶ Wart burner
- ✓ Connected load: 12.5 kW
- ✓ Gas type: Propane gas
- ✓ Natural gas nozzles H and L are enclosed



- ▶ Pot diameter min.: 280 mm
- ▶ Load-bearing capacity: 70 kg

Description

Stool cooker in an XXL format: This stool cooker stands out thanks to its user-friendly work height and solid design. It is also extremely flexible thanks to its low weight.

Features

- Load-bearing capacity max.: 70 kg
- Material: CNS 18/10
Cast ribbed frame
- Gas type: Liquid gas
Natural gas nozzles H and L are enclosed
- Gas burner: Wart burner
- Power: 12,5 kW
- Important information: The pot diameter must be at least 28 cm
A pressure reducer of max. 50 mbar is necessary
- Ignition type: Manual ignition
- Operating mode: Gas
- Ignition guard: Yes
- Properties: Collection tray below the burner
- Pilot flame: Yes
- Number of hobs: 1
- Output hob(s) max.: 12500 W
- Control unit: Toggle

▶ Continue on the next page

Stock-pot stove G-WB 1K1250 XL

- Size: W 590 x D 680 x H 820 mm
- Weight: 31 kg



Stock-pot stove G-WB 1K1250 XL

Add on Products

Gas connection set GW-AI



- Suitable for commercial use: Yes
- Important information: -
- Can be used in: Inner and outer area
- Size: W 64 x D 61 x H 27 mm
- Weight: 1.3 kg

Code-No. 500180
GTIN 4015613586557

Power cleaner F1L, set of 2



- Designed for: Stubborn dirt, especially in kitchens
Grill and combi steamer cleaning (without cleaning system)
- Content: 2 x 1 litre
- Model: Liquid
High concentrate
- Ph level: 13,5

Code-No. 173078
GTIN 4015613731926

Intensive power cleaner F1L, set of 2



- Order quantity unit: 1 box (2 bottles)
- Content: 2 x 1 litre
- Ph level: 14
- HACCP compliant: Yes
- Chlorine-free: Yes
- Phosphate-free: Yes
- Including: 1 spray head

Code-No. 173080
GTIN 4015613731933