

Combi steamer Silversteam 5111D



Description

The Bartscher combi steamer from the Silversteam series with electronic control and 5 shelves in 1/1 GN format – it's the ideal partner for every kitchen. The rack control function allows diverse meals to be prepared at different times. What a relief that the Silversteam has everything under control for you!

Features

- | | |
|---------------------------------------|---|
| • Power load: | 6,3 kW 400 V 50 Hz |
| • Equipment connection: | 3 NAC |
| • Temperature range: | 50 °C to 300 °C |
| • Control unit: | Touch |
| • Functions: | Circulating air
Steam
Combi-steaming
Low temperature cooking
Delta-T cooking
Reversing motor direction (fan wheels)
Steam production by means of direct injection |
| • Rack control: | Yes |
| • Continuous operation: | Yes |
| • Vapour extractor: | Yes |
| • Core temperature sensor connection: | Side |
| • USB connection: | Side |
| • Fan speed: | 3 levels |

► Continue on the next page



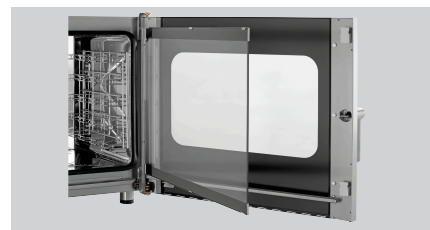
► Up to 5 x 1/1 GN or 600 x 400 mm



- Rack control
- ✓ To enable the selection of a program for each shelf



- Electronic control with 600 programs (300 preinstalled, 300 programmable); up to 9 cooking phases per program



- Double door glazing, inner door can be opened easily for cleaning
- Vapour extractor is easy to regulate

Combi steamer Silversteam 5111D

- Number of cooking programs: 300 pre-installed programs
300 configurable programs
- Number of cooking phases: 9
- Type of drawers: Crosswise
- Number of drawers: 5
- Distance between trays: 74 mm
- Water connection: 3/4"
- Time adjustment: 0 to 599 minutes
- Material cooking chamber: CNS 18/10
- Number of fans: 1
- Properties: Rounded baking chamber
Bearing rails can be detached
Double-winged door pane
LED lighting in door
Socket (500 W) for connection of an extractor hood
- LED display: Steaming
Delta-T cooking
Cooking phases
Core temperature
Fan speed
Program
Temperature
Time
- Including: 1 grille 1/1 GN
1 tray 1/1 GN
1 water supply hose
- Available on request: -
- Control lamp: -
- Series: Silversteam
- Temperature control: Stepless
- Interior lighting: Yes
- Format drawers: 1/1 GN
600 x 400 mm
- Operating mode: Electro
- With cleaning system: No
- Material: CNS 18/10
- Important information: From a water hardness of 5° d.H upwards, we urgently recommend fitting a suitable water softener and a water pressure of maximum 3 bar
- Size: W 890 x D 835 x H 675 mm
- Weight: 84.4 kg



Combi steamer Silversteam 5111D

Add on Products

Smoker-Box 1160



STAINLESS
STEEL



- Comprising: Mains adapter
Smoker-Box
- Volume: 1,16 litre(s)
- Dimensions Smoker-Box: W 125 x D 470 x H 75 mm
- Suitable fuel: Standard smoker materials
- ON/OFF switch: Yes
- Power load: 0,2 kW | 230 V | 50/60 Hz

Code-No. 117712
GTIN 4015613779195

Cooking basket 110

STAINLESS
STEEL



- Gastronorm: 1/1 GN
- Size basket: W 490 x D 275 x H 50 mm
- Content: 7 litre(s)
- Material: Stainless steel
- Important information: -
- Size: W 536 x D 326 x H 61 mm
- Weight: 1.1 kg

Code-No. 900300
GTIN 4015613788111

Base unit Silversteam 110

CNS
18/10



- Number of drawers: 10
- Colour: Silver
- Format drawers: 1/1 GN
- Height-adjustable feet: Yes
- Base shelf: No
- Material: CNS 18/10
- Important information: -

Code-No. 115069
GTIN 4015613602486

Base unit Silversteam 2-110

CNS



- Type of drawers: Longitudinal
- Number of drawers: 6
- Height adjustable: 400 mm to 450 mm
- Colour: Silver
- Format drawers: 1/1 GN
- Base shelf: No
- Material: Chrome-nickel steel

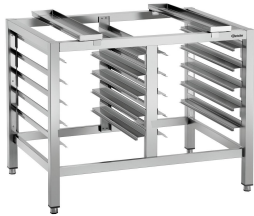
Code-No. 115071
GTIN 4015613617589

Combi steamer Silversteam 5111D

Add on Products

Base unit Silversteam 6040

CNS
18/10



- Material: CNS 18/10
- Colour: Silver
- Type of drawers: Longitudinal
- Number of drawers: 10
- Format drawers: 1/1 GN
600 x 400 mm
- Base shelf: No

Code-No. 115079
GTIN 4015613682051