

## Display fridge 300L



### Description

Generously designed display fridge for an appealing presentation presentation of cakes, packed and unpacked food.

### Features

• Number of intermediate shelves:	3
• Size Clipboard:	W 580 x D 390 mm
• Height-adjustable intermediate shelves:	Yes
• Size utility space:	W 580 x D 390 mm
• Useful height inside:	Variable
• Material surface:	Glass
• Colour:	Glass / black
• Type of glass:	Double glazing All-round glass
• Safety glass:	No
• Type of intermediate shelves:	Glass panes, divided in the middle
• Front pane:	Framed
• Content:	300 litre(s)
• Temperature range:	2 °C to 8 °C
• Temperature control:	In 0.1 °C steps
• Control unit:	Electronic
• Cooling:	Circulating air

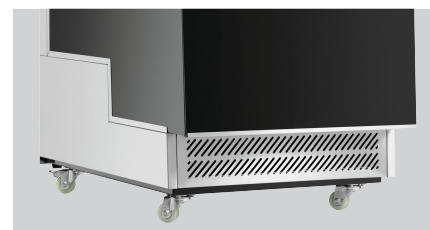
► Continue on the next page



- Appealing presentation of cakes and snacks
- ✓ Intermediate shelves equipped with price rails



- Easy to clean
- ✓ Intermediate shelves made of glass, divided in the middle



- 4 swivel castors for an easy transport

## Display fridge 300L

- Coolant: R134a
- Drip water evaporation: Yes
- Automatic defrosting function: Yes
- Interior lighting: Yes
- Lighting: LED
- Digital display: Yes
- Type of door: Leaf door, glass
- Door hinge side: Right
- Door hinge side can be changed: No
- Height-adjustable feet: No
- Swivel casters: 4 swivel casters, 2 with brake
- ON/OFF switch: Yes
- Control lamp: ON/OFF
- Properties: -
- Including: -
- Power load: 0,46 kW | 220-240 V | 50 Hz
- Material: Stainless steel  
Plastic  
Glass
- Important information: -
- Climate class: 4
- Position of the door: Reverse
- Intermediate shelves with price rails: Yes
- Size: W 655 x D 805 x H 1,470 mm
- Weight: 143 kg

