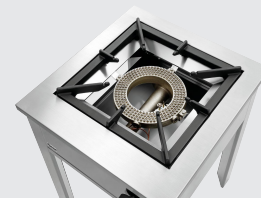




- ▶ Wart burner
- ✓ Connected load: 12.5 kW
- ✓ Gas type: Propane gas
- ✓ Natural gas nozzles H and L are enclosed



- ▶ Pot diameter min.: 280 mm
- ▶ Load-bearing capacity: 70 kg



This stool cooker stands out thanks to its user-friendly work height and solid design. It is also extremely flexible thanks to its low weight.

- Gas type: Propane gas
Natural gas nozzles H and L are enclosed
- Gas burner: Wart burner
- Ignition type: Manual ignition
- Ignition guard: Yes
- Power: 12,5 kW
- Operating mode: Gas
- Material: CNS 18/10
Cast ribbed frame
- Properties: Collection tray below the burner
- Load-bearing capacity max.: 70 kg
- Important information: The pot diameter must be at least 28 cm
A pressure reducer of max. 50 mbar is necessary
- Size: W 680 x D 590 x H 820 mm
- Weight: 31 kg

Stock-pot stove G-WB 1K1250 XL

Add on Products

Gas connection set GW-AI



- Suitable for commercial use: Yes
- Important information: -
- Can be used in: Inner and outer area
- Size: W 64 x D 61 x H 27 mm
- Weight: 1.3 kg

Code-No. 500180
GTIN 4015613586557

Large frying pan, cast, Ø550



- Handle can be detached: Yes
- Diameter surface: 550 mm
- Material: Cast iron
- Important information: -
- Pan height: 80 mm
- Division: None
- Size: W 1,085 x D 550 x H 80 mm
- Weight: 25.4 kg

Code-No. 699335
GTIN 4015613210056

Large frying pan, cast, divided Ø650



- Height of divider: 50 mm
- Handle can be detached: Yes
- Diameter surface: 650 mm
- Material: Cast iron
- Important information: -
- Pan height: 90 mm
- Division: 2-partitions
- Size: W 1,120 x D 650 x H 90 mm
- Weight: 29 kg

Code-No. 699325
GTIN 4015613209906