

BS1240L**700599**

PRODUCT DESCRIPTION

Name	Mini cold room BS1240L
Code-No.:	700599
Construction:	<ul style="list-style-type: none">▪ insulation: polyurethane, 60 mm▪ lockable, with panic lock▪ changeable door hinge▪ prepared for support rails and grids, suspension attachment, loading ramp▪ Assembly set, easy to assemble▪ compressor refrigeration▪ automatic defrost▪ digital control
Material:	exterior: steel sheet PVC coated interior: aluminium, stainless steel bottom
Climate class:	ST, for ambient temperature up to max. 38 °C
Refrigerated room:	capacity: 1240 litres; dimensions: W 855 x D 900 x H 1760 mm
Coolant:	R404a
Working temperature:	2 °C to 10 °C
Power:	0.571 kW / 230 V~ 50 Hz
Dimensions:	W 975 x D 1040 x H 2200 mm
Weight:	160.0 kg

We reserve the right to make technical changes!

Scope of delivery

2 x Side part	2 x Dowel
1 x Bottom plate	4 x Sleeve
1 x Rear wall	26 x M5x12 screw
1 x Door	6 x M5x25 screw
1 x Refrigeration unit	2 x M6x20 screw
2 x Door hinge	38 x Plastic cap

Assembly and installation instructions



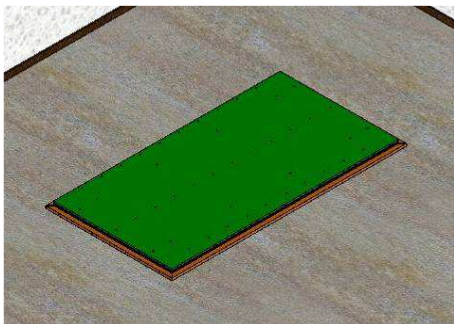
CAUTION!

Assembly and installation of the mini cold room should be performed by the qualified and authorised personnel.

Two persons are required for installation and positioning of the device.

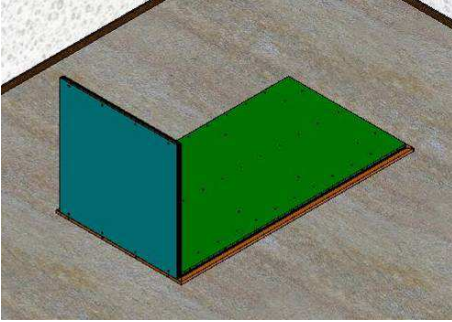
Unpack individual components and check the delivery for any missing elements. Dispose of the entire packaging material according to the regulations valid in a given country.

Prepare even and smooth mounting surface adjusted to the size of the mini cold room to ensure sufficient mounting space.



Step 1

Place one of the side walls on the mounting surface, outer side down.



Step 2

Place the bottom plate in such a way that its holes are aligned with the holes in the side wall. Bolt both parts together with appropriate M5x12 screws. (fig. 1, 2, 3 below).

Make sure that the side wall and the bottom plate are tightly connected.



Fig. 1



Fig. 2

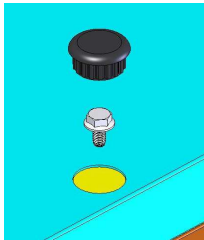
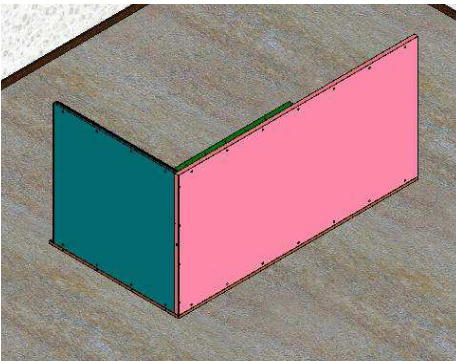


Fig. 3

Connecting individual parts

Each plate must be fastened with M5x12 screws (fig. 1).

Mask the connections with plastic caps (fig. 2) as shown on fig. 3.

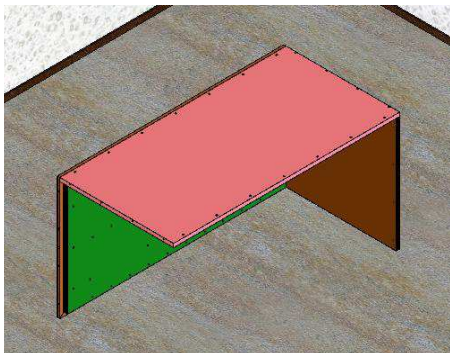


Step 3

Add the rear wall to the structure bolted together in such a way that the holes of the rear wall are aligned with the holes in the side wall and the bottom plate.

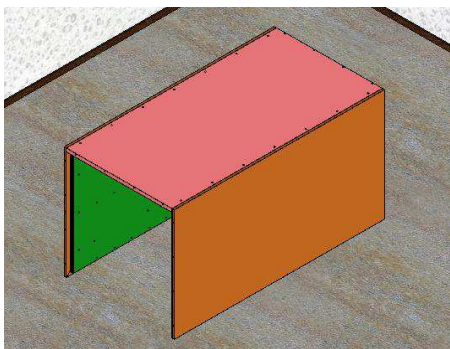
Using M5x12 screws, first fasten the rear wall with the bottom plate and then the rear wall with the side wall.

Make sure that the parts are tightly connected.



Step 4

Turn the entire structure in such a way that the rear wall is at the top.

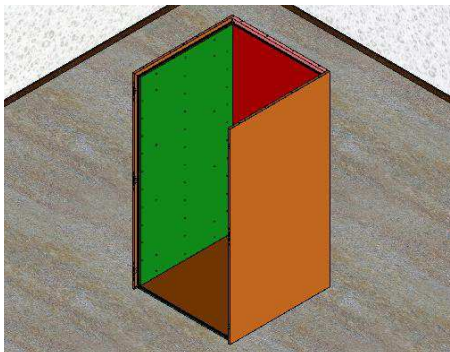


Step 5

Place a second side wall next to the rear wall in such a way that its holes are aligned with the holes in the rear wall and the bottom plate.

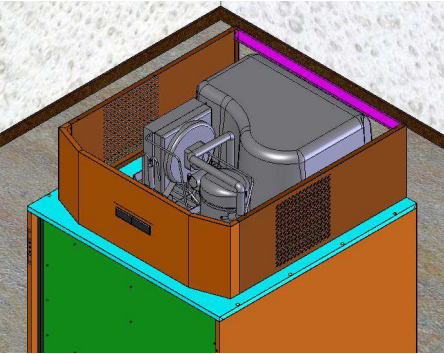
Bolt all the parts together with M5x12 screws.

Make sure that the parts are tightly connected.



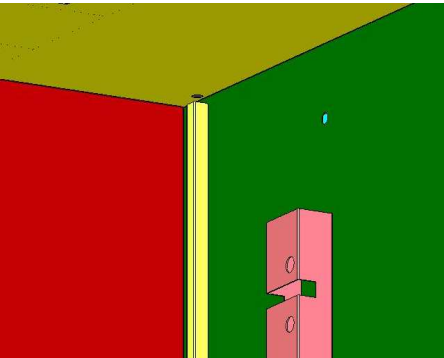
Step 6

Place the mini cold room in vertical position.



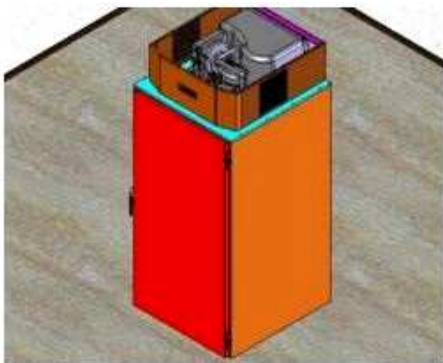
Step 7

Place the refrigeration unit on the mounted parts of the mini cold room as shown on the figure on the left. Fasten it using the supplied M5x12 screws.



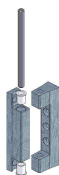
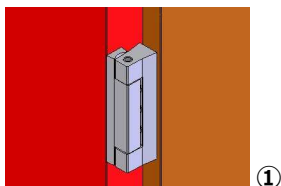
Step 8

Using M6x20 screws, mount (on the right side inside the cold room) the channel for a sensor cover in such a way that it is aligned with the hole in the upper part of the wall.

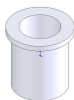


Step 9

The doors of the mini cold room are mounted on two hinges (fig. ①).



②



③



④

Each hinge is fastened to the doors in the following way (fig. ②):

- 1) mount the sleeve ③;
- 2) assemble the hinge;
- 3) place the dowel ④ in the hinge.