

KB330



A120350

General guidelines



Before the operation carefully read this operating manual and then store it in an easy accessible place near the device.

- Children should be supervised to ensure that they are not playing with the device.
- Prevent access of children to the package materials like plastic bags and foamed polystyrene elements. **Choking hazard!**
- The device can be used only when it is in good working order and allows for safe operation. In case of malfunction, contact the service company or sales agent.
- **The can opener is designed only for opening cans.**
0.25 kg to 10 kg cans may be opened with the can opener.

Technical data

Description	Can opener KB330
Code-No.:	A120350
Material:	CNS 18/10, aluminium, plastic; Work surface: CNS 18/10, painted; Knife: stainless steel
Model:	<ul style="list-style-type: none">▪ crank drive▪ clip attachment (prepared for screw attachment)▪ tabletop thickness max.: 45 mm▪ plastic lever for secure handling of cans
Can height:	max. 330 mm
Dimensions:	W 125 x D 290 x H 720 mm
Clip attachment dimensions:	W 98 x D 218 mm
Weight:	1.9 kg

We reserve the right to implement the technical modifications!

List of components

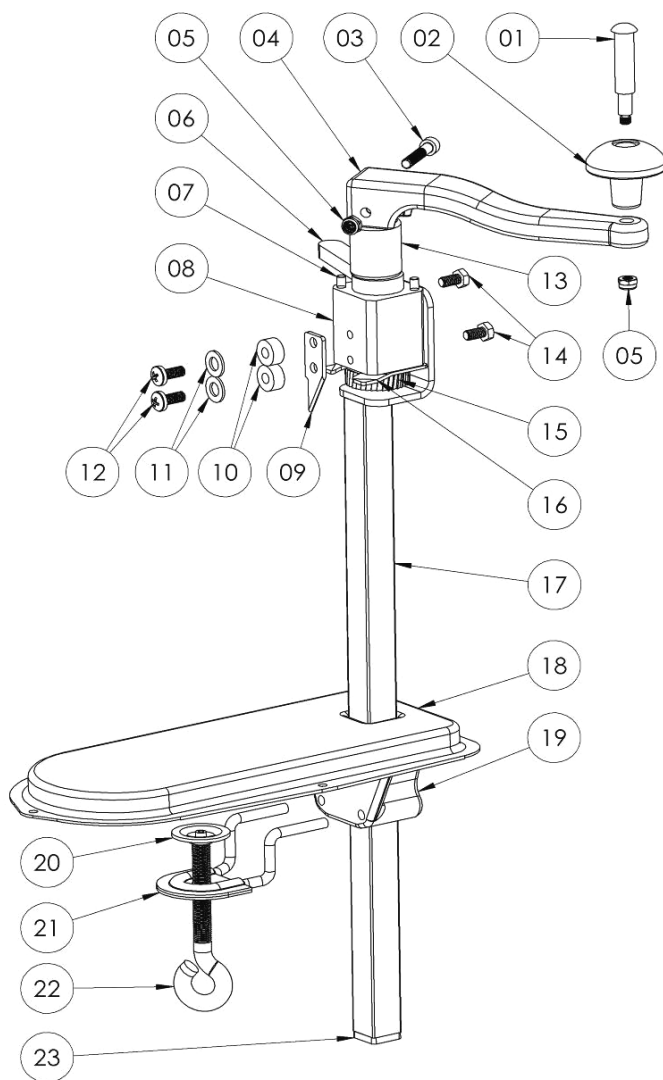


Fig. 1

Description of figure 1 on page 10

- | | |
|--|----------------------------|
| 01 Crank handle screw | 13 Guard |
| 02 Crank handle | 14 M6x15 screws (2) |
| 03 M6x35 hexagon socket screw | 15 Transport wheel |
| 04 Crank drive | 16 Centring plate |
| 05 M6 Nuts (2) | 17 Square pipe |
| 06 Plastic lever | 18 Clip attachment |
| 07 Lock pin | 19 Clamp handle |
| 08 Bearing | 20 Clamp plate |
| 09 Double stainless steel knife | 21 Clamp guide |
| 10 Sleeves | 22 Eye bolt |
| 11 Washers | 23 Cap |
| 12 M6x15 screws | |

Additional accessories (not included in the delivery!)

Knife KB330

- Material: stainless steel
- Dimensions: W 20 x D 17 x H 50 mm
- Weight: 0.03 kg

Code-No. A120351

Transport wheel KB330

- Material: stainless steel
- Dimensions: W 38 x D 38 x H 10 mm
- Weight: 0.08 kg

Code-No. A120352

Properties

- Thanks to the double stainless steel knife it is possible to quickly and cleanly open cans without using excessive force.
- The can opener is effective, easy to use and ensures safe and clean operation in the working environment.
- Assembly and disassembly of the can opener is easy; the device can be mounted practically at any place.
- The can opener is equipped with a plastic lever to ensure firm and secure grip of the can.
- A square pipe with adjustable height enables opening of cans of up to 330 mm height.

Operation

Prepare the device

- Unpack the device and remove and dispose of all package materials according to the environmental protection regulations.
- Select an appropriate place for mounting the can opener. The tabletop thickness may not exceed 45 mm.
- Do not mount the device near the sources of heat such as ovens, cookers or heaters. There is a risk of decolouration or damaging plastic elements of the can opener.

Installation of the can opener

Mount the device in the selected place. Observe the following instructions:

1. Place the clip attachment on an even, non-skid surface.
2. Turn the eye bolt counter clockwise until the clip attachment is tightly bolted to the tabletop.

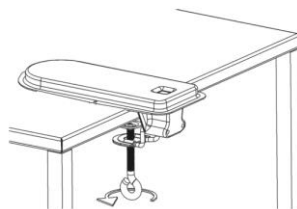


Fig. 2

3. The clip attachment may be additionally attached to the tabletop with 3 bolts by screwing them into designated holes.

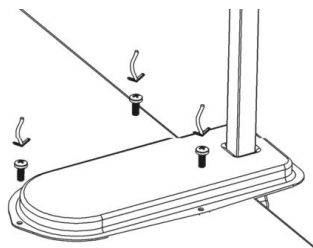
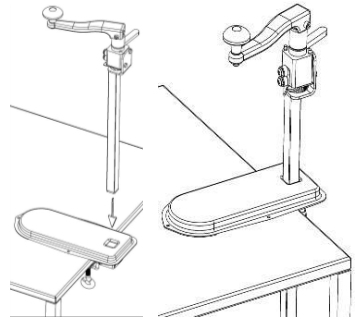


Fig. 3

4. Insert the square pipe of the can opener to the hole in the clip attachment. Put a cap on a lower end of the square pipe.
5. The square pipe may be set at different heights, depending on the can.

**Fig. 4**

Opening of cans

Before the first use, make sure that the stainless steel knife and transport wheel are clean, because they will come into contact with food. Follow the instructions included in section “**Cleaning**”.

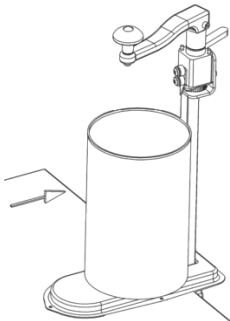
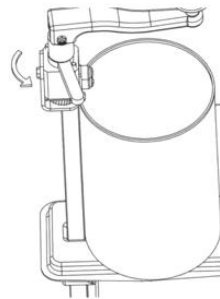
Before opening, clean the can's lid with a moist cloth.



WARNING!

Use caution when working with the stainless steel knife, because it is very sharp!

Do not operate the device with wet hands!

**Fig. 5****Fig. 6**

1. Pull the square pipe upwards and place the can on the clip attachment, so that it stands directly next to the pipe and below the transport wheel.
2. Turn the plastic lever forward counter clockwise.

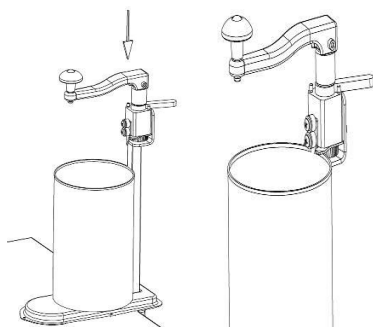


Fig. 7

3. Press firmly the crank to cut through the can's lid with a knife.

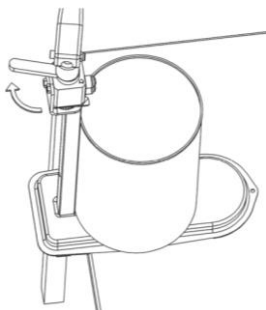


Fig. 9

5. Turn the plastic lever counter clockwise until reaching the lock pin. The distance between the stainless steel knife and the transport wheel is reduced. The can is tightly clamped between the knife and the transport wheel.

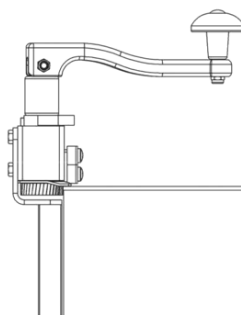


Fig. 8

4. By pressing the crank on the centring plate an optimum position of the can's edge between the knife and cutting surface is determined.

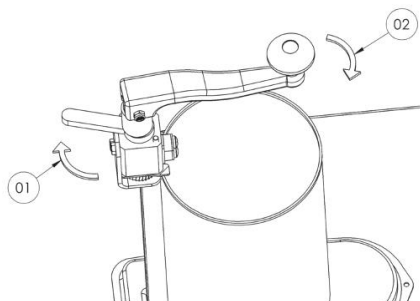


Fig. 10

6. Press the plastic lever with one hand and keep in this position (pos. 01, fig. 10). Turn the crank clockwise using another hand (pos. 02, fig. 10), until opening the can.

Cleaning



WARNING!

There is a risk of formation of bacteria which may reach the contents of the can and result in health problems. The can opener must be thoroughly cleaned.

CAUTION!

Do not use any scouring agents that include solvents or corrosive cleaning agents for cleaning. They may damage the surface.

- Regularly clean the can opener at the end of the working day, or more frequently if necessary.
- Pay particular attention to cleaning of the transport wheel and the stainless steel knife, because they come into contact with food.

Clean the stainless steel knife and transport wheel with cloth soaked in warm water with mild cleaning agent. In case of more stubborn dirt, the transport wheel may be cleaned with a brush for dish washing or a toothbrush. Wipe with a clean cloth to remove the cleaning agent residues.

- Clean other elements of the device with a soft, moist cloth and dry thoroughly or leave the device to dry in the air.
- If the device is not used for any lengthy periods, clean it thoroughly as per description and store (preferably in the original packaging) at the room temperature in dry, clean place protected against sun and children. Do not place any heavy objects on the device.

Maintenance

- In case of intense use of the can opener, the stainless steel knife and transport wheel may get deformed, therefore they should be regularly checked. If the elements are worn out, replace them by contacting the service company.
- Regularly inspect the mounting of stainless steel knife, if necessary tighten the screws.

Possible defects

Problem	Possible reason	Solution
The crank is not turning or moves but with resistance	Food residues on the transport wheel	Clean the transport wheel
Can cannot be open	Damaged stainless steel knife	Contact the service company.
	Damaged transport wheel	Contact the service company.
	Loose bolts for mounting the stainless steel knife	Tighten the bolts
The can opener is wobbling during the operation	Loose clamp of the clip attachment	Tighten the clamp
When turning the crank the can is sliding off, the can is not opening correctly (sharp edges)	The plastic lever was not properly screwed to the lock pin or is not firmly held	Pay attention to the position of the hands when opening the can (Section 6, Fig. 10).

Bartscher GmbH
Franz-Kleine-Str. 28
33154 Salzkotten
Germany

phone: +49 5258 971-0
fax: +49 5258 971-120
Service-Hotline: +49 5258 971-197
www.bartscher.com