

Ice-cube maker B 90 Plus



Description

More efficient and economic – the optimised ice cube maker series B Plus supplies fully tapered ice cubes in high production quantities and is also very economic.

Features

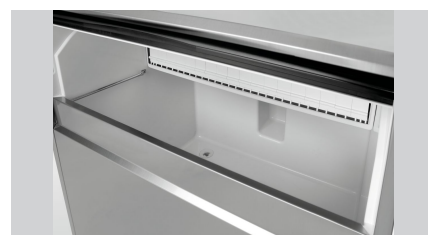
- | | |
|------------------------------------|---------------------------------------|
| • Height without feet: | 910 mm |
| • Water outlet: | Ø 20 mm |
| • Design ice cube: | Tapered form (full taper) |
| • Ice cube size: | 35 x 32 mm, 20 g |
| • Production / work step: | 56 Ice cubes |
| • Number of ice cube sizes: | Size can be adjusted steplessly |
| • Power load: | 0,98 kW 230 V 50 Hz |
| • Coolant: | R134a / 0,350 kg |
| • Properties: | Switch for the ice cube size |
| | Cleaning function |
| | Water consumption / hour: 2.46 litres |
| • Control lamp: | ON/OFF |
| • ON/OFF switch: | Yes |
| • Colour: | Silver |
| • Control unit: | Electronic |
| • Can be fitted below the counter: | Yes |
| • Can be installed: | No |

▶ Continue on the next page



- ▶ Design ice cube: Conical (full cone)
- ✓ Ice cube size: 35 x 32 mm, 20 g

- ▶ Production max.: 89 kg / 24 hours.
- ▶ Production / operation: 56 ice cubes



- ▶ Storage container capacity: 42 kg



- ▶ Can be fitted below the counter



- ▶ Selector switch for the ice cube size
- Number of ice cube sizes: Size can be adjusted steplessly

Ice-cube maker B 90 Plus

- Water connection: 3/4"
- Climate class: T
- Cooling: Air cooled
- Filling level sensor: Yes
- Storage container capacity: 42 kg
- Production max.: 89 kg / 24 h
- Production by means of: Spray system
- Including: 1 ice shovel
- Material: Stainless steel
- Plastic
- Steel
- Galvanised
- Important information: Clearance to all sides at least 15 cm
- Height-adjustable feet: No
- Size: W 700 x D 581 x H 995 mm
- Weight: 63 kg

